

### HEAD OFFICE



1 Genting Link

#02-04, Perfect One

Singapore 349518



(+65) 6748 2277



(+65) 6744 0033



sales@hakko.com.sg



@hakkoproducts

### How to use Shape J and examples

This shape differs from Shape B and I by bending the tip end and is capable of soldering by applying the tip in 2 ways: face and point. It is used for drag soldering and correction of bridging.

### Soldering tiny chip parts such as 0603

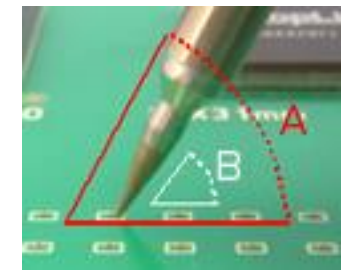


Enlarge the tip end

You can hold the grip with the natural angle (Refer to A) while soldering with Shape J, which has the same high-angle of tip end (Refer to B) as Shape I.

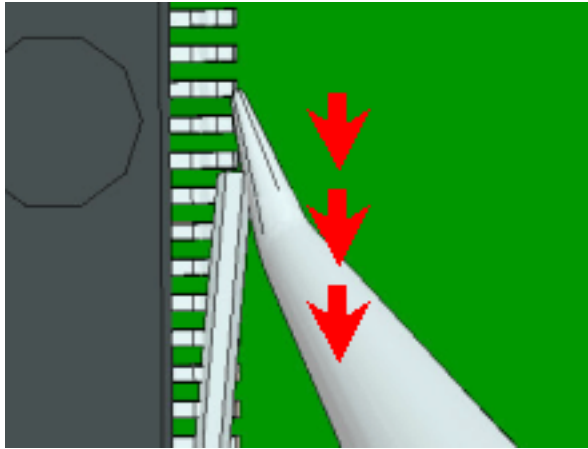


Shape J



Shape I

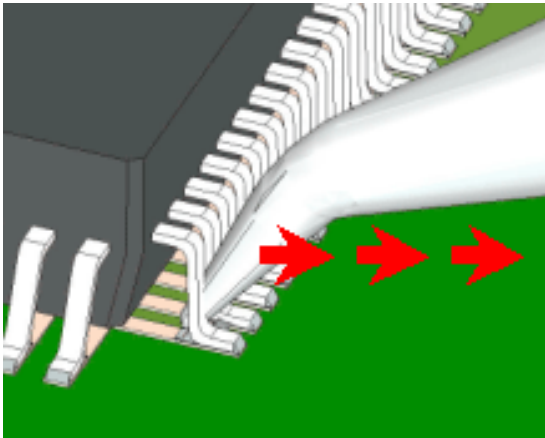
## Drag Soldering



Lay down the end pad section and drag the tip slowly.

**Note:** Apply flux to leads and land pads before soldering. It prevents the troubles such as solder bridge.

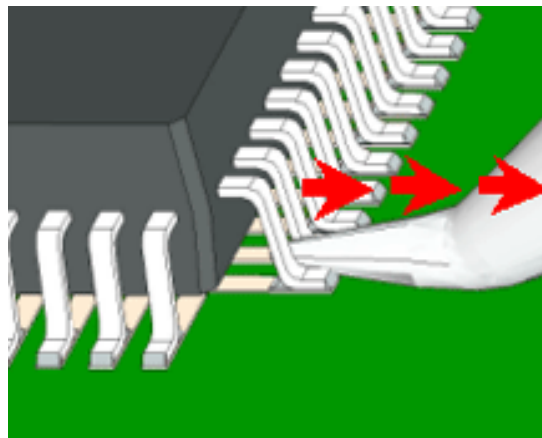
## Correcting Bridging



*\*If the bridge amount is small*

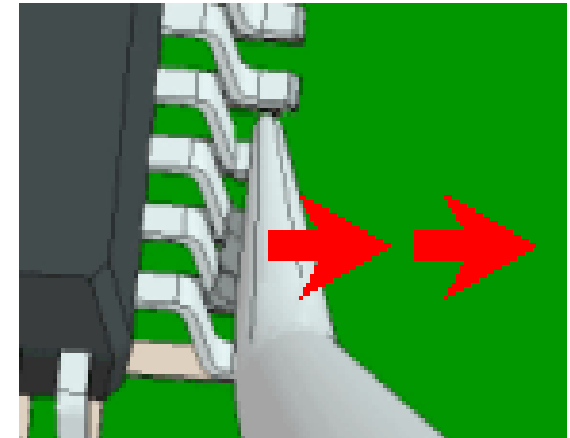
Stand the tip on end and drag the tip slowly.

**Note:** Please operate with clean tip.



*\*If the bridge amount is large*

*Lay down the end pad section and drag the tip slowly while putting the tip on the solder in the bridged section.*



The operating bellow is also available.

**Note:** Please operate with clean tip.