

HEAD OFFICE



1 Genting Link

#02-04, Perfect One

Singapore 349518



(+65) 6748 2277



(+65) 6744 0033



sales@hakko.com.sg

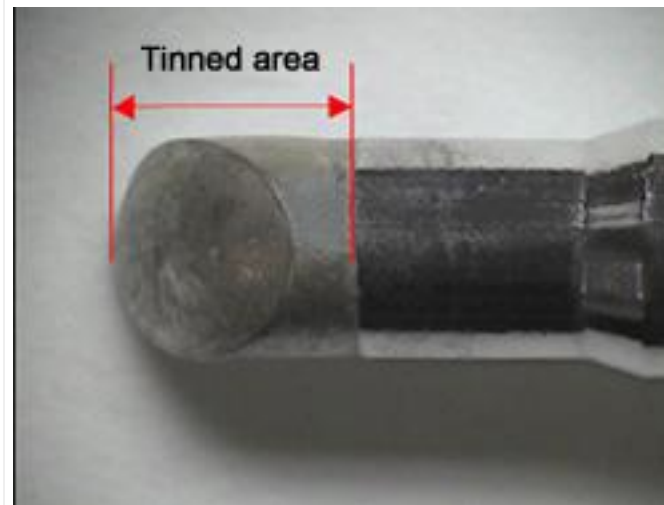


@hakkoproducts

Shape Difference

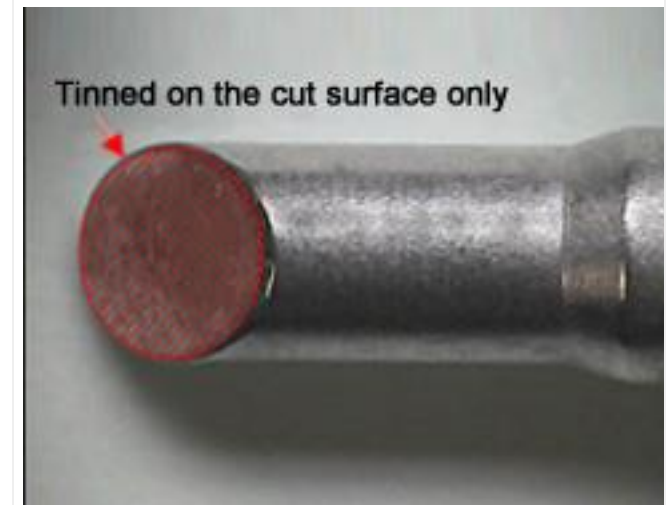
BC/C Shape

Feature	Tips are tinned at the certain area of the tip end as following picture.
Recommend use	- For the heavy duty soldering. - If there is enough space between each components.

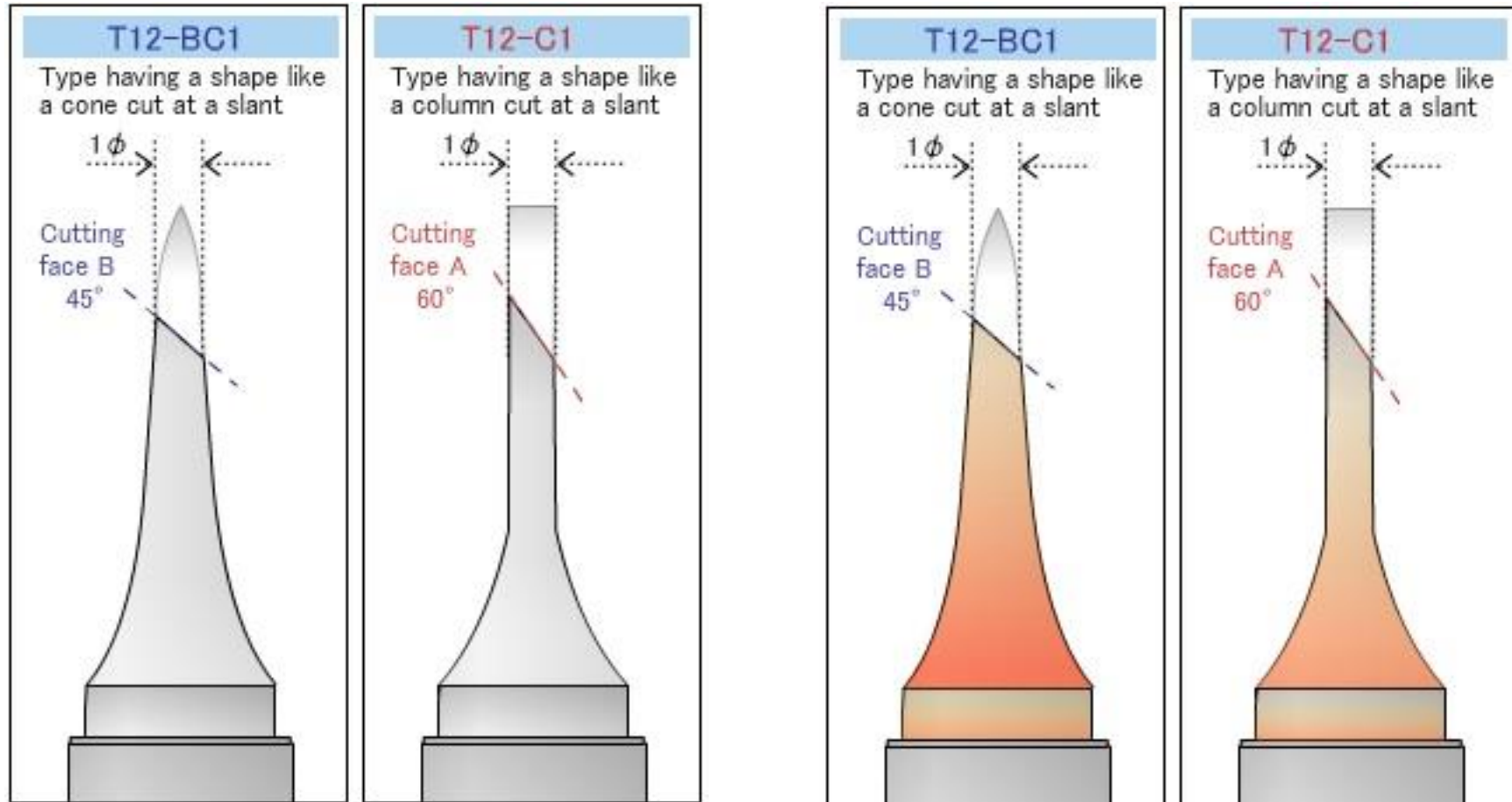


BCF/CF Shape

Feature	Tips are tinned at the surface only.
Recommend use	- Components are dense. - Easy to be bridging.



Difference between Shape BC and C



For example, see how types 1BC and C of T12 series differ from each other. They have a same diameter but have different heat capacity.

In type BC with its conical shape, the nearer to the base, the thicker the diameter. Therefore, although these types have the same diameter, type BC has more heat capacity. In addition, the thicker the tip, the higher the heat capacity.

Extra Notes*

Tips having the same diameter but different sectional face areas are produced by cutting at different cut angles. Also in the T12 series for instance, faces with different sectionals are produced because of being cut a different cut angles.